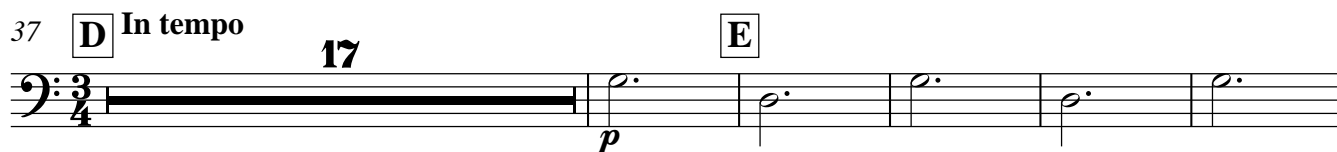
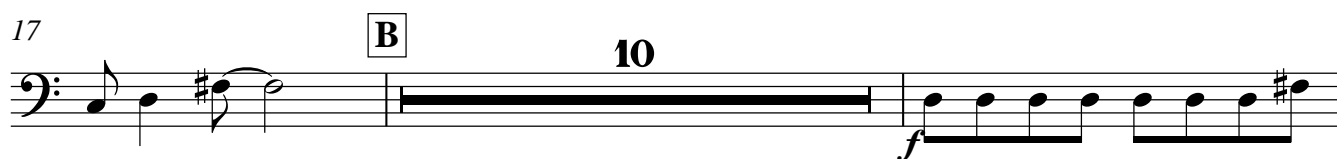


# "МОССЕЛЬПРОМ"- "ОКНА РОСТА" Маяковского

Contrabass Balalaika

Кирилл ВОЛКОВ

**Presto**



[illegible]

The bass line is written on a single staff in 4/4 time. It begins with a whole rest, followed by a half note G2, a half note F2, a quarter note E2, and a quarter note D2. This is followed by a half note C2, a half note B1, a quarter note A1, and a quarter note G1. The line ends with a whole rest.

The bass line of 'The Rose Tree' is written on a single staff in bass clef. It consists of three measures. The first measure contains a quarter note G2, a quarter note A2, and a half note B2. The second measure contains a quarter note C3, a quarter note D3, a quarter note E3, a quarter note F3, a quarter note G3, a quarter note A3, a quarter note B3, and a half note C4. The third measure contains a quarter note D4, a quarter note E4, a quarter note F4, a quarter note G4, a quarter note A4, a quarter note B4, a quarter note C5, and a half note D5.

The bass line of 'The Rose Tree' is written on a single staff with a bass clef and a key signature of one sharp (F#). The melody consists of the following notes: G2 (quarter), A2 (quarter), B2 (quarter), C3 (quarter), D3 (quarter), E3 (quarter), F#3 (quarter), G3 (half). The final note, G3, is tied to the start of the next measure, which contains a whole rest.

Musical notation for the bass line of 'The Rose Tree'. The key signature has one sharp (F#). The melody consists of six measures: 1. G2, A2, B2, A2, G2, F#2. 2. Rest, G2, A2, B2, A2, G2. 3. G2, A2, B2, A2, G2, F#2. 4. Rest, G2, A2, B2, A2, G2. 5. G2, A2, B2, A2, G2, F#2. 6. Rest, G2, A2, B2, A2, G2.

The bass line of 'The Rose Tree' is written on a single staff with a bass clef. It consists of five measures. The first measure has a quarter rest, followed by eighth notes G2, A2, and B2, and a quarter rest. The second measure has an eighth rest, followed by eighth notes B2, A2, and G2, and a quarter rest. The third measure has a quarter rest, followed by eighth notes F2, E2, and D2, and a quarter rest. The fourth measure has eighth notes D2, C2, and B1, followed by a quarter rest. The fifth measure has eighth notes B1, A1, and G1, followed by a quarter rest.

The bass line of 'The Rose Tree' is written in 3/4 time. It begins with a treble clef and a key signature of one flat (B-flat). The melody starts with a quarter note G2, followed by a quarter note F2, and then a quarter note E2. This is followed by a half note D2, and then a half note C2. The melody then continues with a quarter note B1, followed by a quarter note A1, and then a quarter note G1. The melody ends with a quarter note F1, followed by a quarter note E1, and then a quarter note D1. The melody is marked with a piano (pp) dynamic.